

TO LET
SELF-CONTAINED GROUND & BASEMENT FLOOR STUDIO/ OFFICE
SHAD THAMES, LONDON SE1
THIS BUILDING IS NOT ELECTED FOR VAT



SELF-CONTAINED UNIT

HIGH CEILINGS

CAT 2 LIGHTING

ELECTRIC HEATING

EXCELLENT NATURAL LIGHT

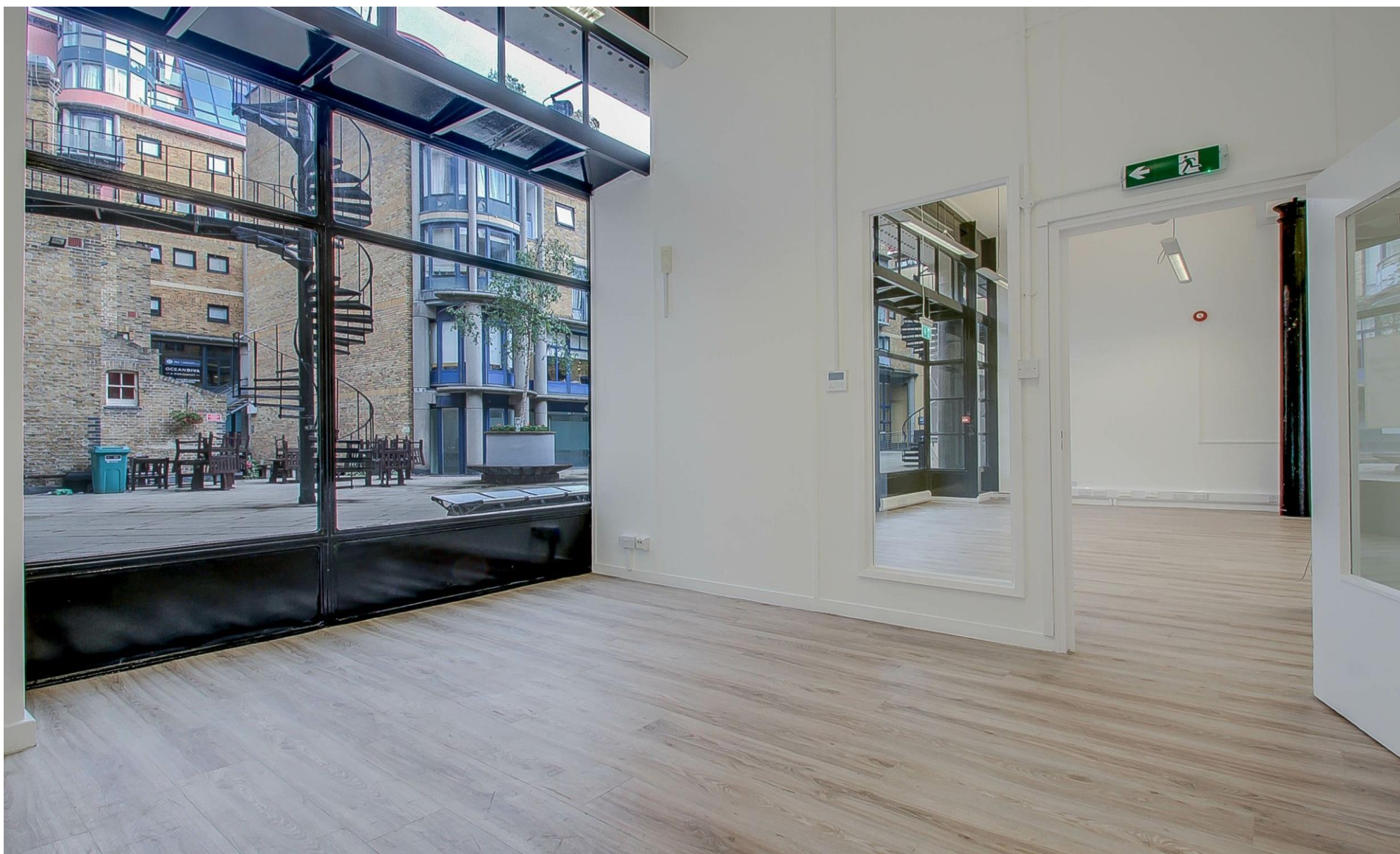
**VARIOUS COMMERCIAL
USES**

**SECURE PARKING
(BY WAY OF A LICENCE)**

3, GAINSFORD STREET, LONDON, SE1 2NE
SIZE – 2,454 SQ FT (228 SQ M) (£26.86 PER SQ FT OVERALL).

**TO LET - £65,928 P.A EXCL
AVAILABLE NOW.**









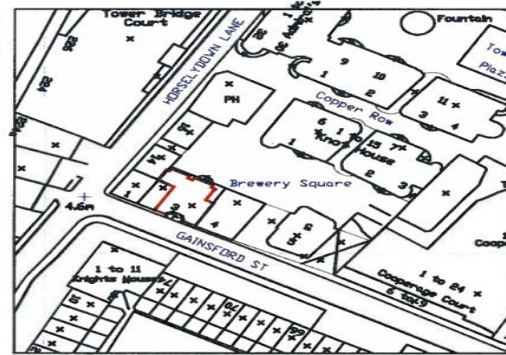




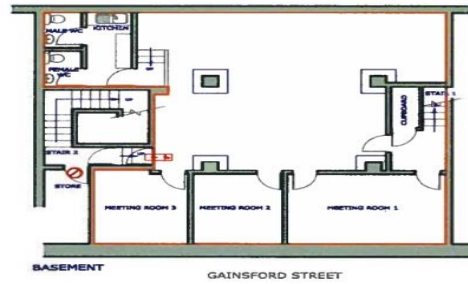


PLAN 1

LOCATION PLAN
SCALE 1:1250



PLEASE NOTE - ALL PLANS TO BE PRINTED 'AS IN DOCUMENT' NOT ENLARGED OR SHRUNK TO FIT PAGE



Handwritten signature: K. Jones

PLAN LONDON LTD © COPYRIGHT PROTECTED 2006

client	address 3 GAINSFORD STREET LONDON, SE1 2LE	location BASEMENT & GROUND FLOOR LEASE PLAN	date 21.02.07	scale 1:200	sheet A4	PLAN LONDON
			dwg. no. PL27062-01	revision		The Old Bakery 139 Half Moon Lane, London, SE24 9JN Tel: 0845 2262776 Fax: 0845 2262774 http://www.planlondon.co.uk

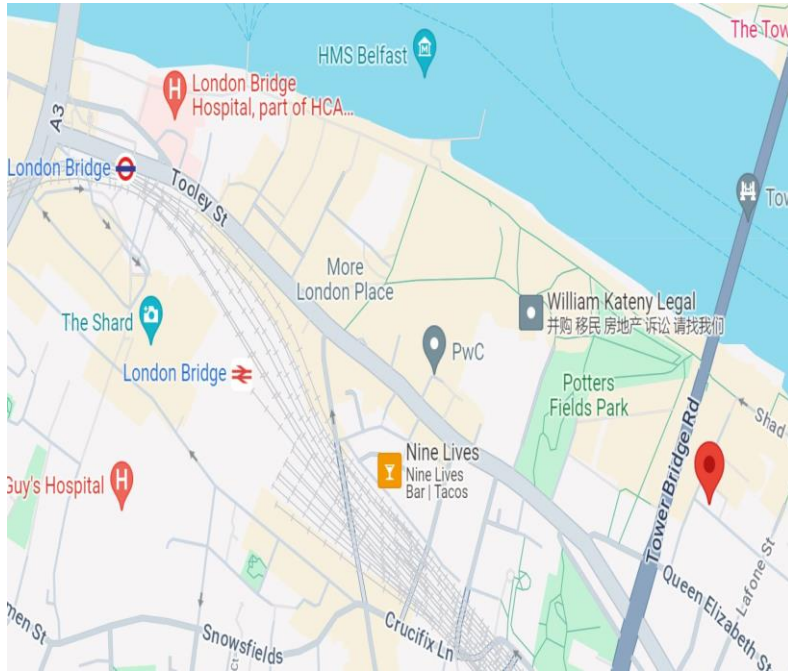
Location

Located at the western end of Gainsford Street and close to the junction with Horselydown Lane. The property forms part of an exclusive mixed use complex providing a host of local attractions to include a variety of bars, restaurants and other amenities. There are various bus routes serving all destinations with London Bridge mainline and underground station within walking distance.

Description

A self-contained studio / office arranged over the ground & Lower Ground Floors benefitting from high ceilings and excellent natural light. The ground floor is predominantly open plan with the advantage of having a private meeting room space. The lower ground floor is ideal for storage to include a store cupboard, W.C facilities and services.

Ground Floor:	1,345 sq ft (125 sqm) @ £35 per sq ft	= £47,075
Basement Floor:	1,109 sq ft (103 sqm).@ £17.50 per sq ft	= £18,853
Total:	2,454 sq ft (228 sqm)	= £65,928 per annum



Description

specifications include:

- ❖ Self-contained unit
- ❖ High Ceilings
- ❖ Electric heating
- ❖ Open plan space
- ❖ Separate meeting area
- ❖ Lower Ground Storage
- ❖ Close to all amenities
- ❖ Walking distance to London Bridge

Rent

£65,928 per annum exclusive of all outgoings. This equates to £26.86 per sq ft overall.

Terms

New lease direct on terms by arrangement.

Rates

The Rateable Value for the year 2023/24 is £48,750. Therefore the rates payable is approx. £24,320 per annum.

Council tax payable is approx.
Ground Floor – Council Tax approx.

Service Charge.

Approximately £3 per sq ft per annum.

EPC

EPC asset rating = Band C - 56

Further Details

Ian Lim
Lim Commercial
E: ian@limcommercial.com
Tel: 07885 912 982